

REV	REVISION RECORD	NOTE
1	Add dimension	(1) 9 Next production of order No.077-2993-11

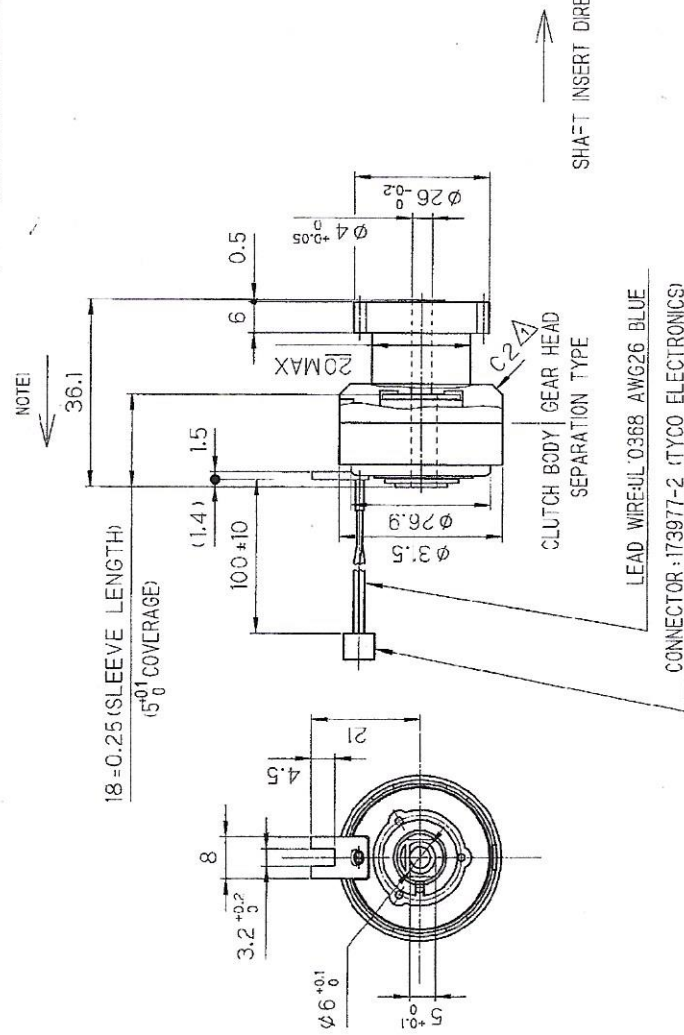
SPECIFICATIONS

1. RATED VOLTAGE : 24VDC
2. NOMINAL OPERATING VOLTAGE : 24VDC ±10%
3. WATTAGE : 2.1W (AT 20°C)
4. COIL RESISTANCE : 24Ω ±10% (AT 20°C)
5. STATIC TORQUE : 0.343Nm MIN. (AT 24.0VDC, 20°C)
6. DRAG TORQUE : 0.03Nm MAX. (AT NO EXCITATION)
7. TRANSMISSION : GEAR INPUT, SHAFT OUTPUT
8. USAGE : SHAFT : STEEL SHAFT
9. LOAD CONDITIONS
 - LOAD INERTIA : $J = 0.125 \times 10^{-4} \text{ kgm}^2$ MAX.
 - LOAD TORQUE : 0.122Nm MAX.
 - ROTATION SPEED : 50 ~ 500r/min
10. INSULATION CLASS : CLASS E (JIS)
11. INSULATION RESISTANCE : 100MΩ MIN. AT 500VDC
12. DIELECTRIC STRENGTH : 1000VAC FOR 1min OR 1200VAC FOR 1sec BETWEEN WINDINGS AND FRAME.
13. USAGE TEMPERATURE AND HUMIDITY : 20 ~ 38°C, 15 ~ 80% RELATIVE HUMIDITY. (NO DO BE DEWY.)
14. STORAGE TEMPERATURE AND HUMIDITY : -20 ~ 60°C, 5 ~ 95% RELATIVE HUMIDITY. (AT STATE OF PACKING, NO DO BE DEWY.)
15. MASS : 50g (REF)
16. GENERAL TOLERANCE : ±0.5MILLIMETER

SPUR GEAR SPECIFICATION

GEAR TEETH TYPE	INVOLUTE
RACK TOOTH FORM	ISO M53
NORMAL MODULE	1.0
PRESSURE ANGLE	20°
NUMBER OF TEETH	24
PITCH DIAMETER	24
DISPLACEMENT OVER TOOTH	$E_s = 7.72 \frac{0}{-0.14}$
TESTING PLEASURE	1.75 ± 0.12N
MAXIMUM TOTAL COMPOSITE ERROR	0.100MAX
MAXIMUM TOOTH TO TOOTH COMPOSITE ERROR	0.034MAX
MATERIAL	POM(AW-01) COLOR : BLACK

(THE DRAWINGS AND TECHNICAL INFORMATION INCLUDED HEREIN ARE THE PROPERTY OF OGURA INDUSTRIAL AND CAN NOT BE DUPLICATED WITHOUT WRITTEN APPROVAL FROM OI.)



Note

1. The total length of the clutch is 36.1mm with the gear head pushed in the direction of the arrow.
2. Use the diode [V06C:made by HITACHI Ltd.] for the serge absorber when you measure the specification value.
3. Do not use the gear head in the flat cutting part of the shaft.

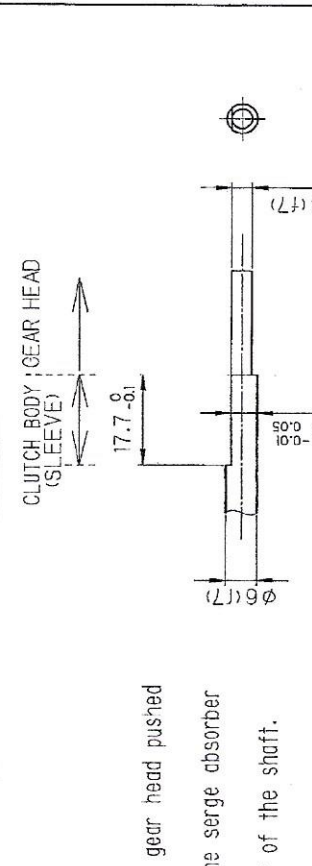
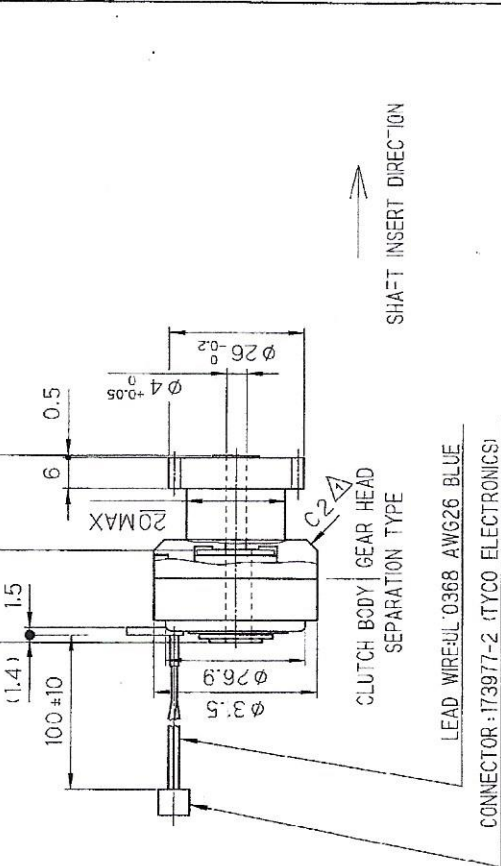
HISTORY	APPROVED	DATE	SIZE	CUSTOMER
45591665	<i>R. Nagama</i>	Jul. 12. 11	A3	MIC 3.5T-25
ISSUE NO	CHKD	DATE	SCALE	CUSTOMER
3	<i>R. Nagama</i>	Jul. 12. 11	1/1	DWG NO 12IE27551
PLANT	DWN	DATE	PARTS	NAME
3	Yokohama	Jul. 07. 2011	CODE	ELECTROMAGNETIC CLUTCH
ISSUE DATE	2-11322-1800		DWG NO	370 249 26
OGURA CLUTCH Co.,LTD.			SHT	1



REV	REVISION RECORD	NOTE
1	Add dimension	(1) 9 Real production of order No.077-7991-11

SPECIFICATIONS

- RATED VOLTAGE : 24VDC
- NOMINAL OPERATING VOLTAGE : 24VDC ±10%
- WATTAGE : 2.1W (AT 20°C)
- COIL RESISTANCE : 24Ω ±10% (AT 20°C)
- STATIC TORQUE : 0.343Nm MIN. (AT 24.0VDC, 20°C)
- DRAG TORQUE : 0.03Nm MAX. (AT NO EXCITATION)
- TRANSMISSION : GEAR INPUT, SHAFT OUTPUT
- USAGE SHAFT : STEEL SHAFT
- LOAD CONDITIONS
- LOAD INERTIA : $J=0.125 \times 10^{-4} \text{ kgm}^2$ MAX.
- LOAD TORQUE : 0.122Nm MAX.
- ROTATION SPEED : 50~500r/min
- INSULATION CLASS : CLASS E (JIS)
- INSULATION RESISTANCE : 100MΩ MIN. AT 500VDC
- DIELECTRIC STRENGTH : 1000VAC FOR 1min OR 1200VAC FOR 1sec BETWEEN WINDINGS AND FRAME.
- USAGE TEMPERATURE AND HUMIDITY : 20~38°C, 15~80% RELATIVE HUMIDITY. (NO DO BE DEWY.)
- STORAGE TEMPERATURE AND HUMIDITY : -20~60°C, 5~95% RELATIVE HUMIDITY. (AT STATE OF PACKING, NO DO BE DEWY.)
- MASS : 50g (REF)
- GENERAL TOLERANCE : ±0.5MILLIMETER



Note

- The total length of the clutch is 36.1mm with the gear head pushed in the direction of the arrow.
- Use the diode (V06C:made by HITACHI Ltd.) for the serge absorber when you measure the specification value.
- Do not use the gear head in the flat cutting part of the shaft.

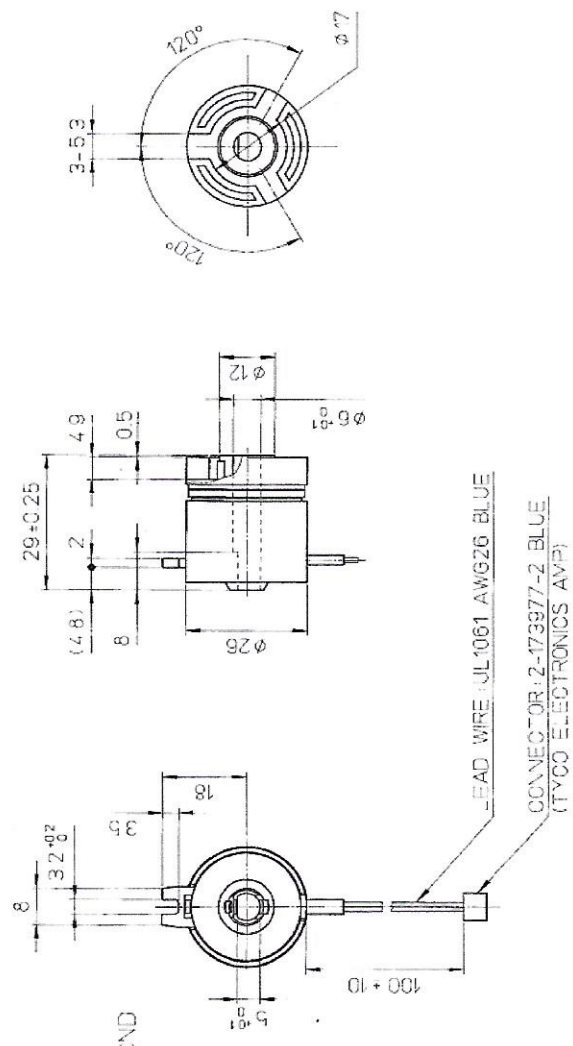
HISTORY		APPROVED	DATE	SIZE	CUSTOMER
45591665	△	<i>S. Sasaki</i>	Jul. 12 '11	A3	MIC 3.5T-25
		<i>H. Nagano</i>	Jul. 12 '11	SCALE	
		<i>Y. Oobara</i>	Jul. 12 '11	1/1	
ISSUE NO	PLANT	PARTS CODE	DATE	NAME	
11.7.13	3	2113221600	JUL072011	ELECTROMAGNETIC CLUTCH	
ISSUE DATE				DWG NO	370 249 26
					01

ROHS COMPLIANT

THE DRAWINGS AND TECHNICAL INFORMATION INCLUDED HEREIN ARE THE PROPERTY OF OGURA INDUSTRIAL AND CAN NOT BE DUPLICATED WITHOUT WRITTEN APPROVAL FROM OI.

REV	REVISION RECORD	NOTE
-----	-----------------	------

SPECIFICATIONS
 NORMAL OPERATING VOLTAGE : 24VDC
 WATTAGE : 3.1W
 COL RESISTANCE : 185.6Ω±10% (at 20°C)
 STATIC TORQUE : 0.245Nm MIN (at 24VDC 20°C)
 INSULATION CLASS : E
 INSULATION RESISTANCE :
 100MΩ±5% MINIMUM AT 500VDC
 DIELECTRIC STRENGTH :
 1000VAC FOR 1 MINUTE OR 1200VAC 1 SECOND
 GENERAL TOLERANCE : ±0.5



HISTORY		DATE	SIZE	CUSTOMER
45587088/△	DATE	10/10/08	A3	MIC 25NEW-4.4
DATE	SCALE	10/10/08	1	
DATE	SCALE	10/06/08	1	
DATE	SCALE	10/05/2008	1	
ISSUE NO	PARTS	2113221600		ELECTROMAGNETIC CLUTCH
ISSUE DATE	PLANT	3		370 236 30
	CODE			00
				SH
				1

DIMENSIONS IN : MILLIMETER

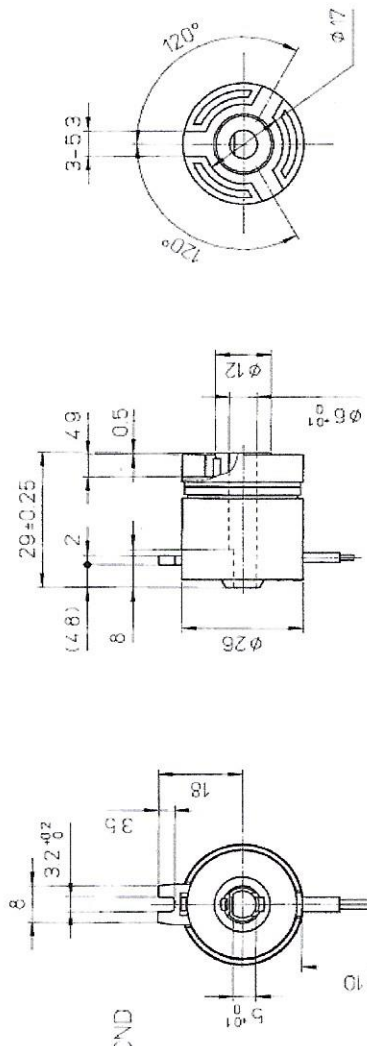


THE DRAWINGS AND TECHNICAL INFORMATION INCLUDED HEREIN ARE THE PROPERTY OF OGURA INDUSTRIAL
 AND CAN NOT BE DUPLICATED WITHOUT WRITTEN APPROVAL FROM OI.

REV	REVISION RECORD	NOTE
-----	-----------------	------

SPECIFICATIONS

- NORMAL OPERATING VOLTAGE : 24VDC
- WATTAGE : 3.1W
- COLD RESISTANCE : $185.6 \pm 10\%$ (at 20°C)
- STATIC TORQUE : 0.245Nm MIN (at 24VDC 20°C)
- INSULATION CLASS : E
- INSULATION RESISTANCE : $> 10^9$ OHMS MINIMUM AT 500VDC
- DIELECTRIC STRENGTH : 1000VAC FOR 1 MINUTE OR 1200VAC 1 SECOND
- GENERAL TOLERANCE : ± 0.5



DIMENSIONS IN : MILLIMETER

HISTORY	APP. <i>M. J. J. J.</i>	DATE <i>Apr. 10, '08</i>	SIZE A3	CUSTOMER
	ENG. <i>M. J. J. J.</i>	DATE <i>Apr. 10, '08</i>	SCALE 1/1	MODEL MIC 25NEW-44
	DWG NO. 45587088/1	DATE <i>Apr. 08, '08</i>		CUSTOMER (DWG NO.)
	ISSUE NO.	DATE Nov 05 2008		NAME ELECTROMAGNETIC CLUTCH
	PLANT 3	PARTS CODE 21132216CO		DWG NO. 370 236 30
	ISSUE DATE			SHEET 1
				OGURA CLUTCH Co.,LTD

(THE DRAWINGS AND TECHNICAL INFORMATION INCLUDED HEREIN ARE THE PROPERTY OF OGURA INDUSTRIAL AND CAN NOT BE REPLICATED WITHOUT WRITTEN APPROVAL FROM O.I.)